



Prospects and Problems GPON Technology over Ethernet Technology

Md. Hayder Ali

hayder.iict@gmail.com

SANOG 23 Conference
Thimpu, Bhutam

Bangladesh :

Name: People's Republic of Bangladesh

Population: 164.4 million

Capital City: Dhaka (12 million)

Total Area: 55,599 sq miles (147,570 sq km)

GDP : 900 USD/per capita

Telecom Environment in Bangladesh



Teledensity : 47.80 %

Internet density : 7.10 %

Network Coverage : 98% (through wireless)

26 Type – 832 Operators

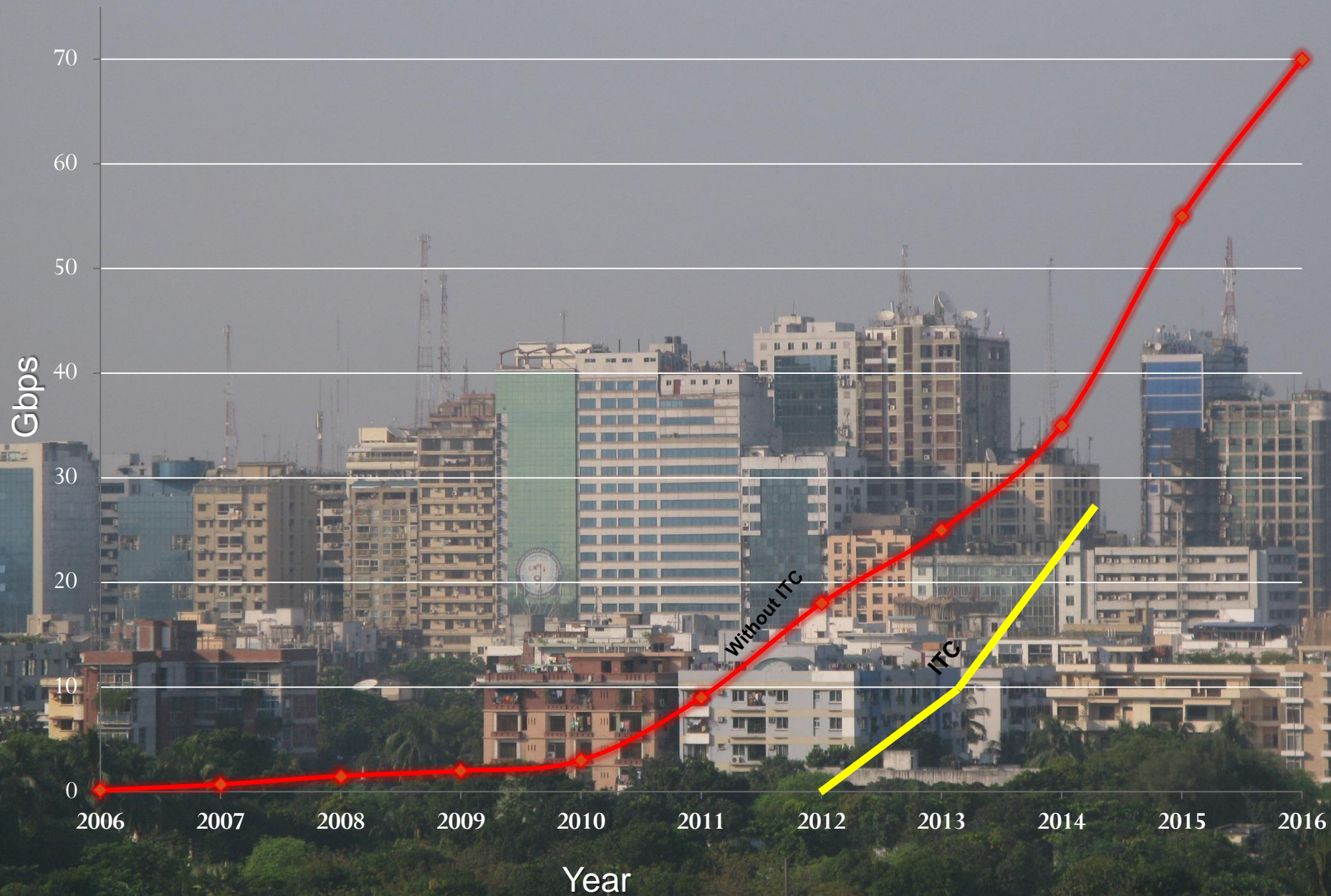
Cell Phone Operator : 6

BWA (Wimax) : 2

ISP : 359

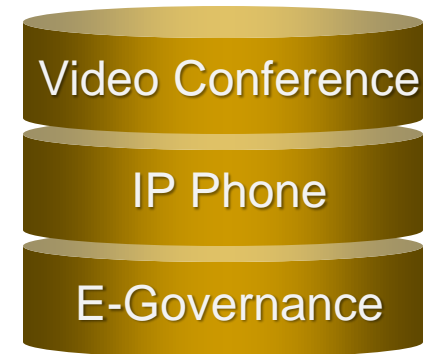
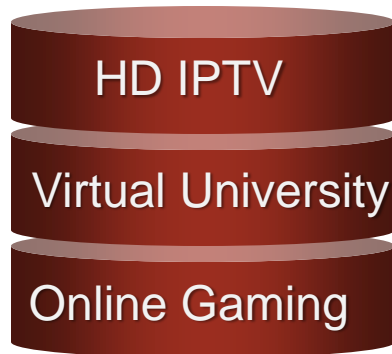
NTTN : 2

Internet Bandwidth Usage Growth :



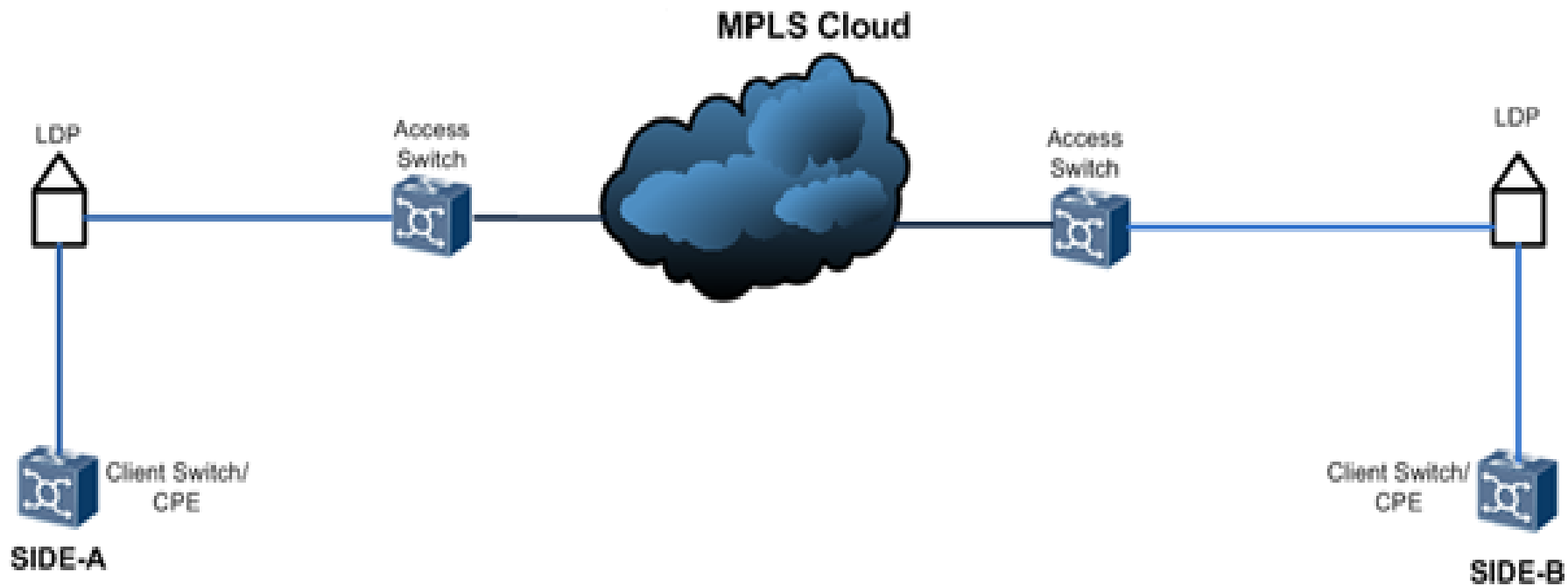
Present Need of Bangladesh :

Fiber Network



Fiber Network

Legacy Ethernet Switch Network:

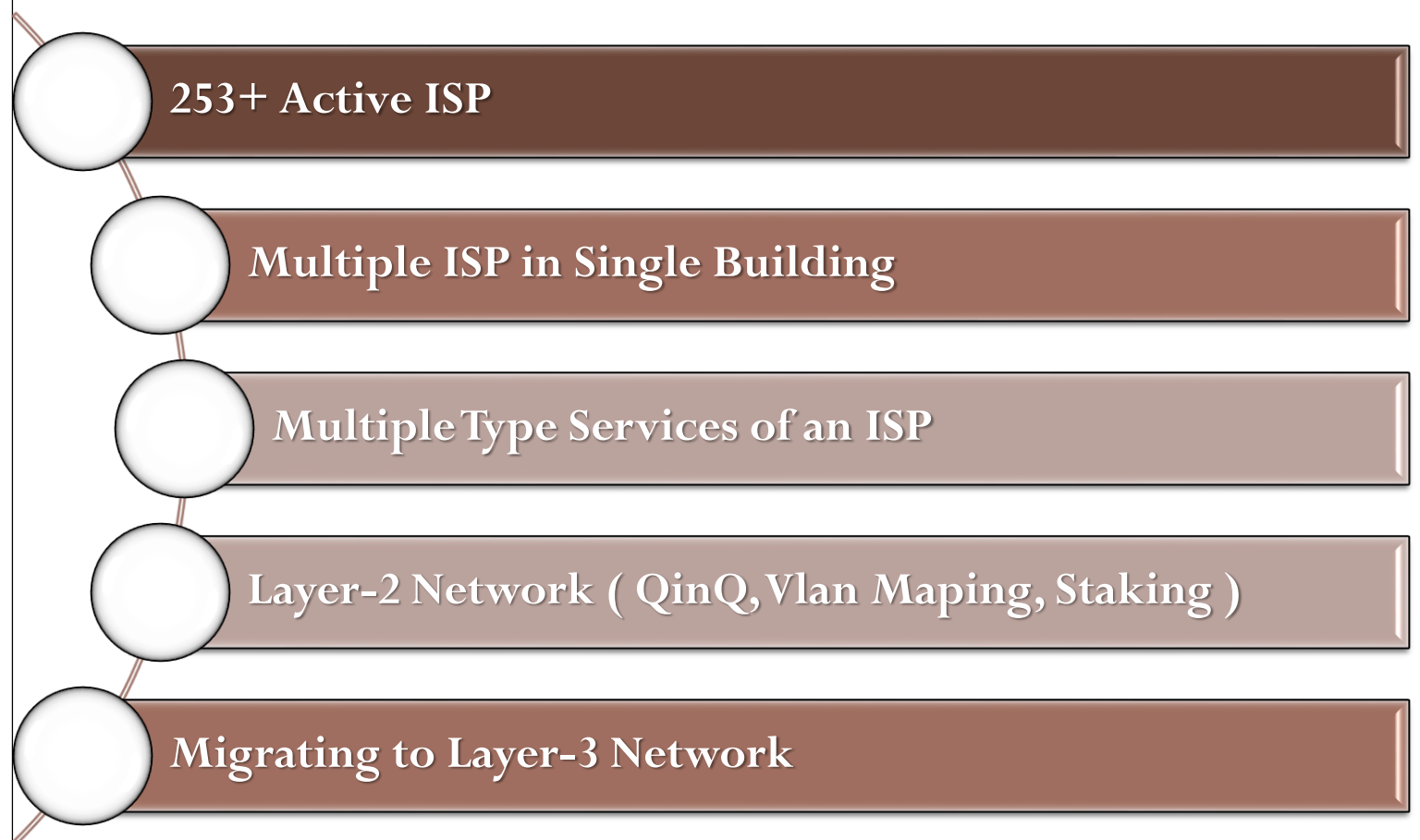


Traditional Ethernet Connectivity

Problems With Switch Network :

- Not Cost Effective
- Underground Fiber Network is Costly
- O&M – Decentralized
- Limited Fiber Network Resources
- Triple Play Service is Not Available
- TDM Backhauling is Expensive

Challenges to Migrate the Present Network :





FTTx by GPON Technology

Solution

● FTTx

- **Fiber to the x (FTTx) is a generic term for any broadband network architecture using optical fiber to replace all or part of the usual metal local loop used for last-mile telecommunications.**

● GPON

- **GPON or Gigabit Passive Optical Network is an optical technology based on the industry standard ITU-TG.984x which was ratified in 2003.**
- **This technology was originally developed to provide high speed Ethernet services for residential and small business customers. It supports higher rates, enhanced security, and choice of Layer 2 protocol (ATM, GEM, Ethernet).**

● How GPON works

- **GPON has a downstream capacity of 2.488 Gb/s and an upstream capacity of 1.244 Gbp/s that is shared among users.**
- **Encryption is used to keep each user's data secured and private from other users.**

Types of FTTx :

- FTTN (fiber to the node or fiber to the neighborhood)
- FTTC (fiber to the curb or fiber to the cabinet)
- FTTP (fiber to the premises)
- FTTB (fiber to the building or fiber to the basement)
- FTTH (fiber to the home). etc

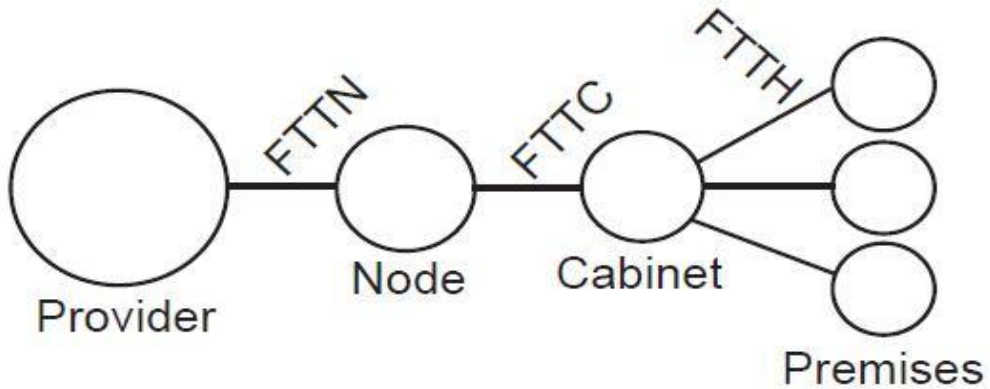


Figure: FTTx

FTTx Network :

OLT (Optical Line Terminal)

(In Central office)



Splitter (1:16 or 1:32)

(In LDP-Local Distribution Point)



ONU (Optical Network Unit)/ONT (Optical Network Terminal)

(In BDB-Building Distribution Box/Clients Home/ Building basement)



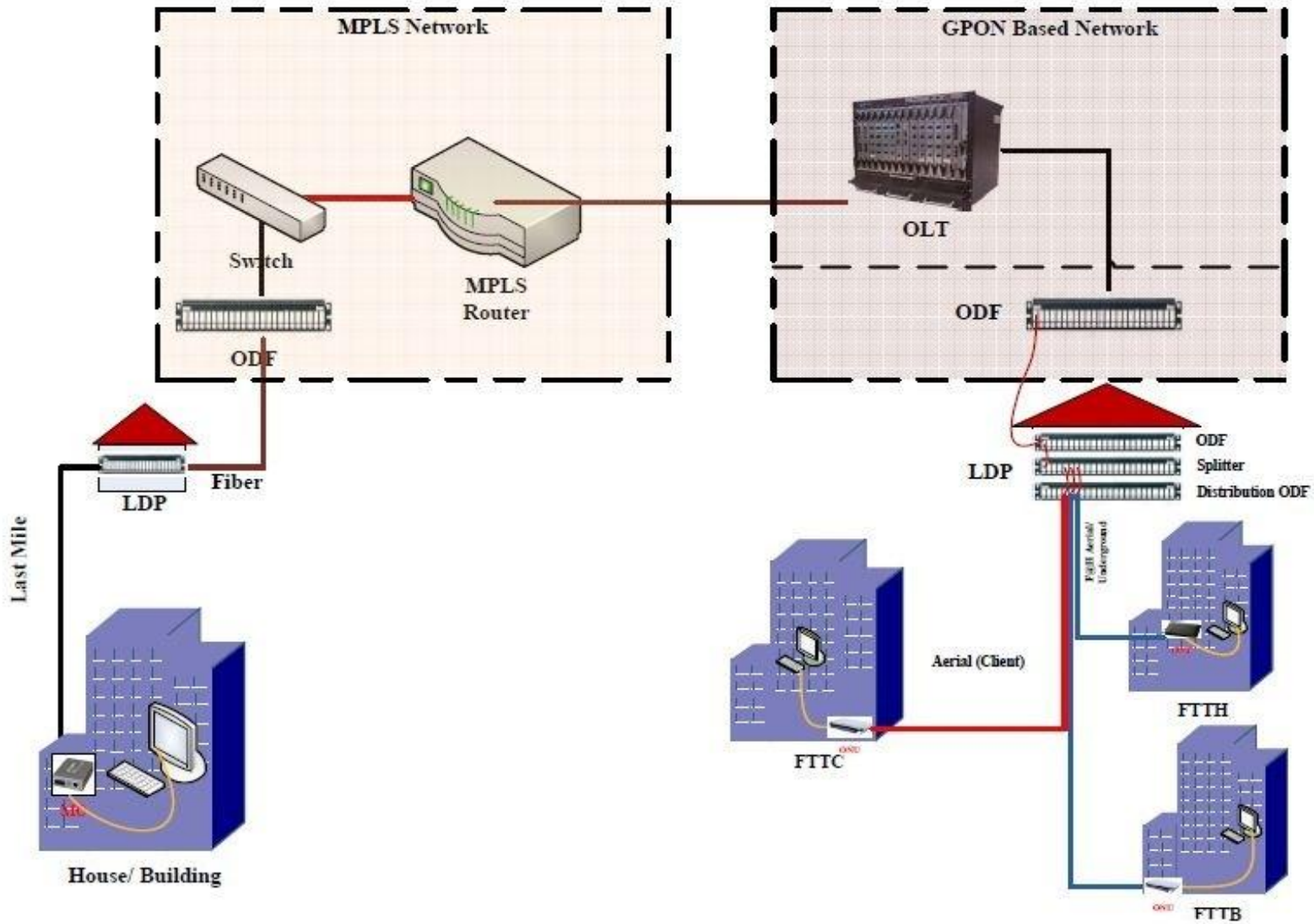
End Device

(Laptop/Desktop/Switch/Router etc.)

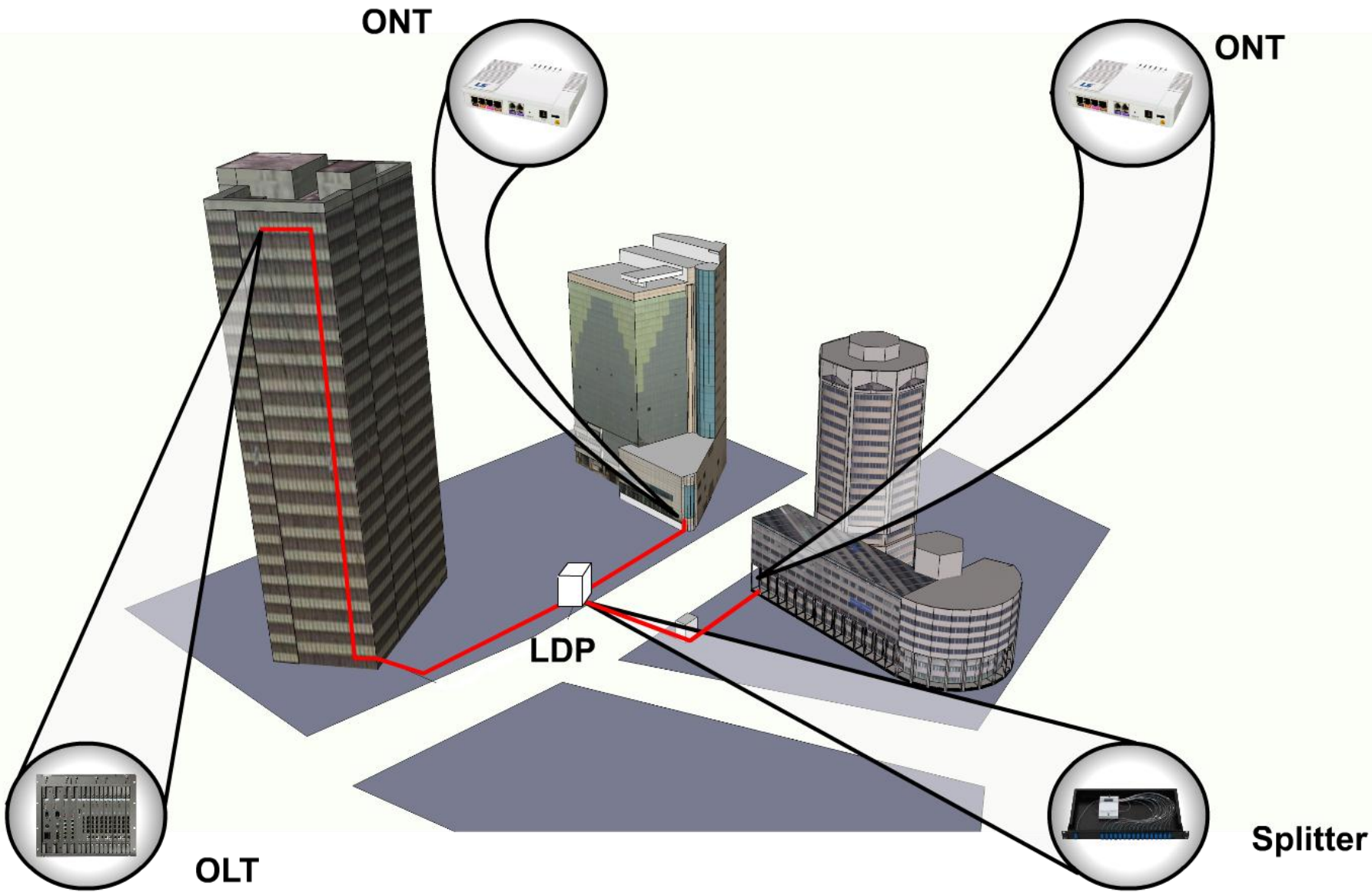


FTTx Network In Bangladesh :

FTTx Network

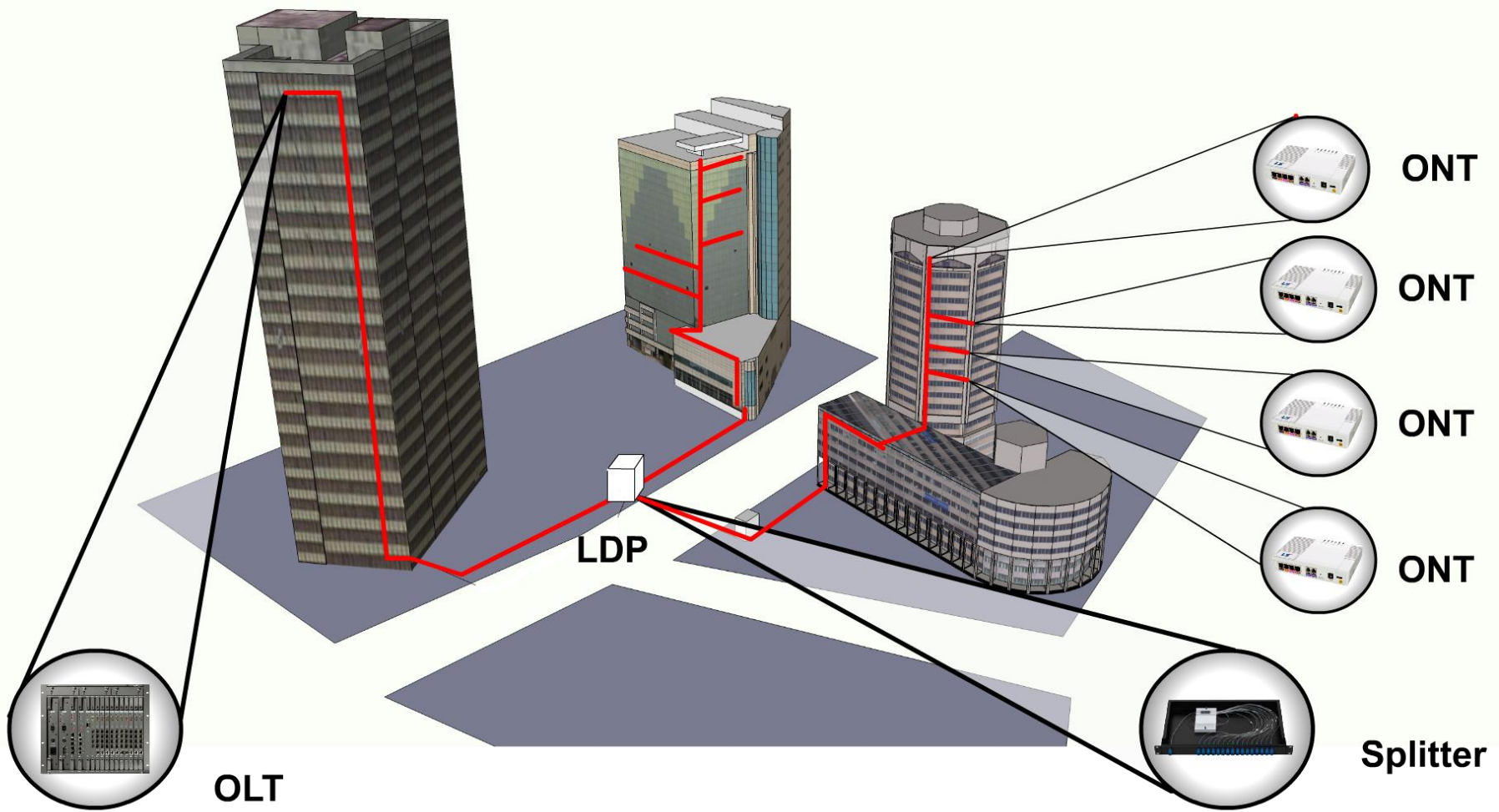


FTTB Format :



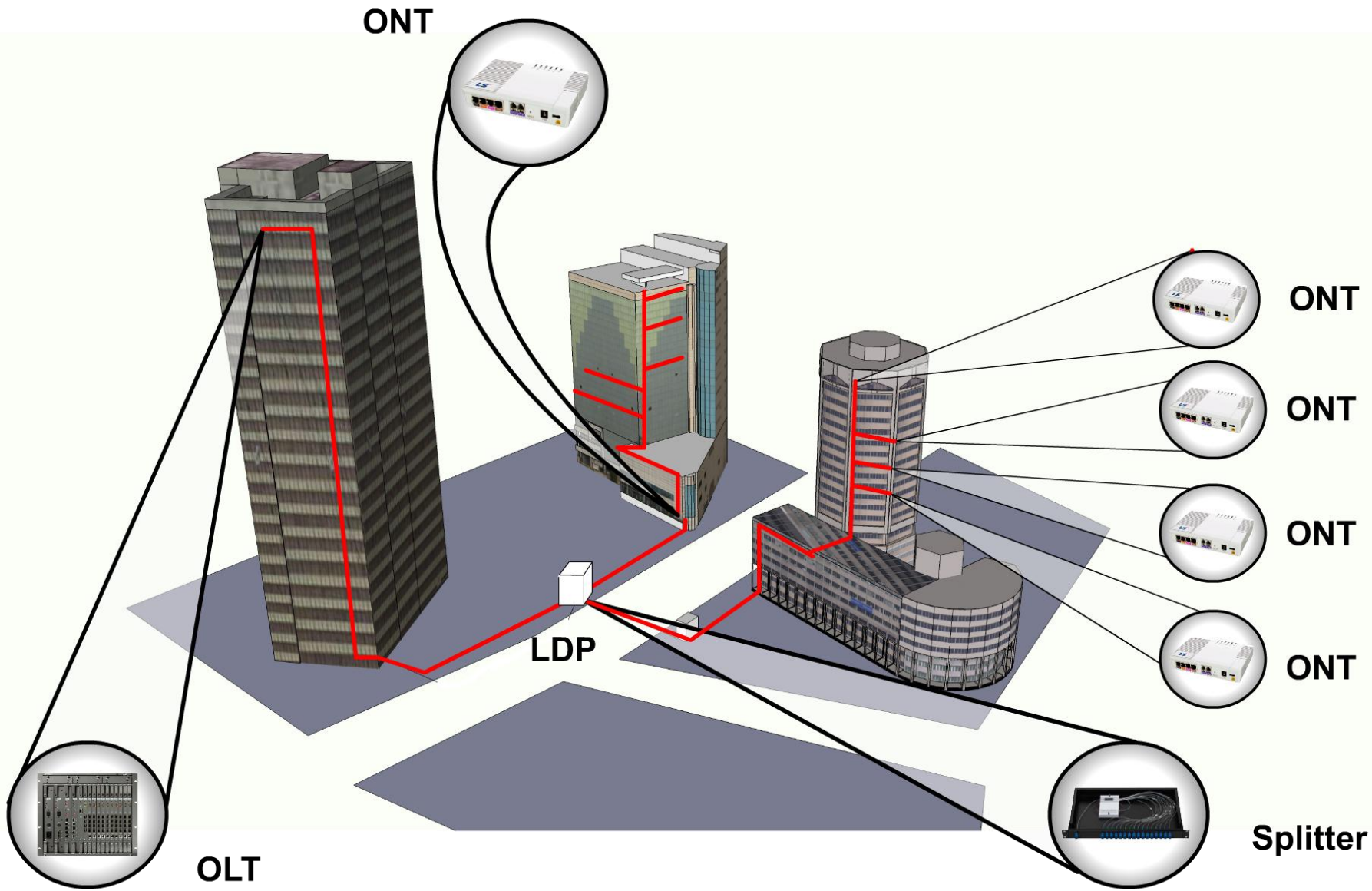
Fiber To The Building (FTTB)

FTTH Model :



Fiber To The Home (FTTH)

FTTB and FTTH Model : User Choice Network



Fiber To The Home & Building (FTTH-B)

Pilot Project : FTTx Project in Dhaka City

FTTx Pilot Project in Dhaka City



Ducting & Cabling Area : 23 km

Total Subscriber Approx : 3000

Commenced on April 2009

Commissioned : Feb., 2010



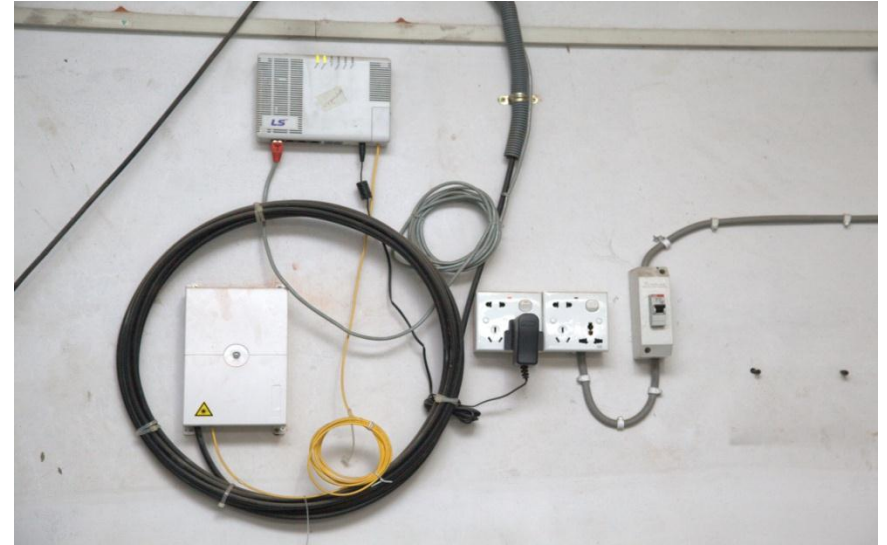
FTTx Network – Local Distribution Point



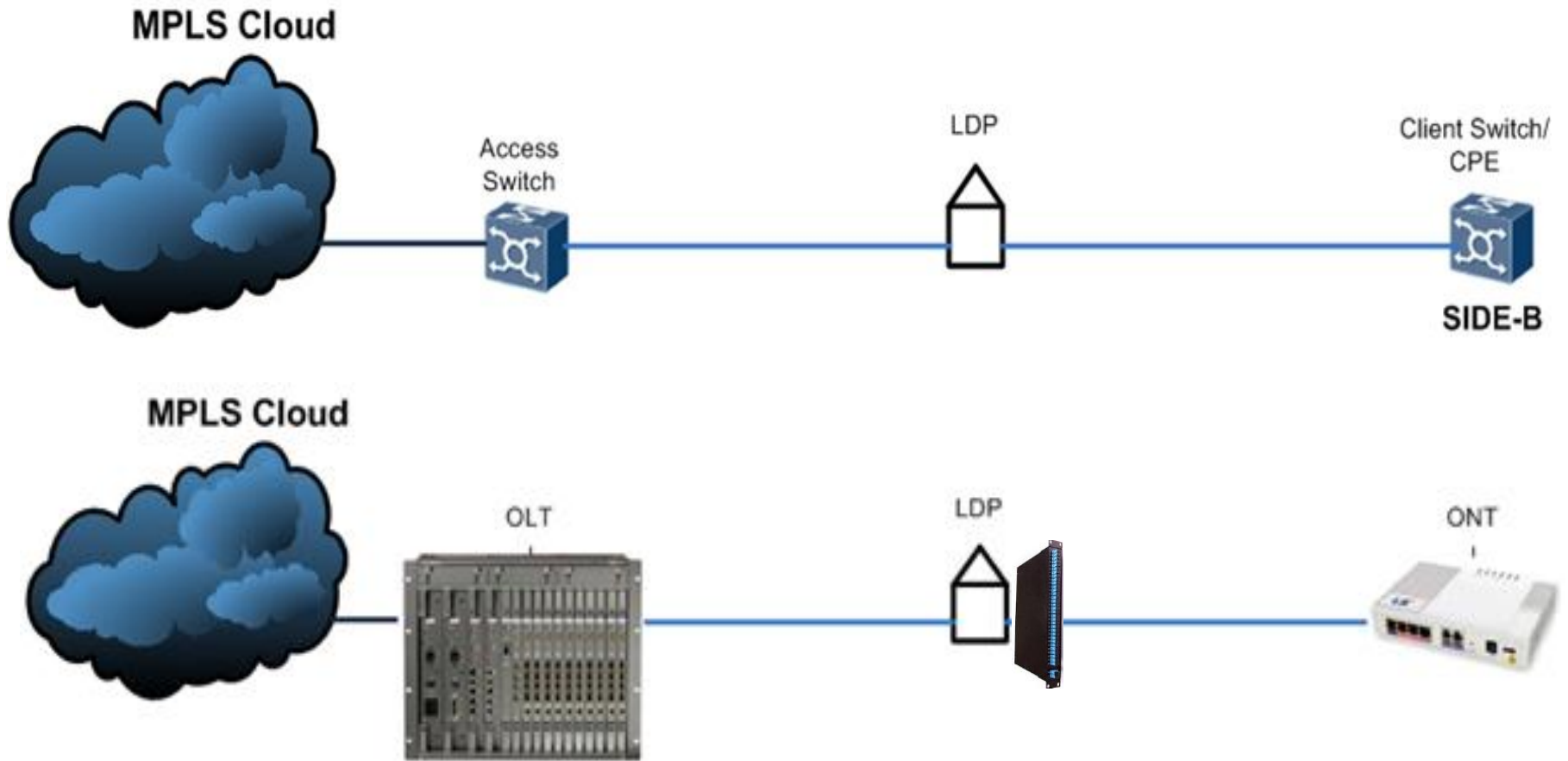
32 LDPs of a Pilot Project in Dhaka City

All LDPs Contain Splitters

ONT replaced of a pilot project of a FTTx Area :



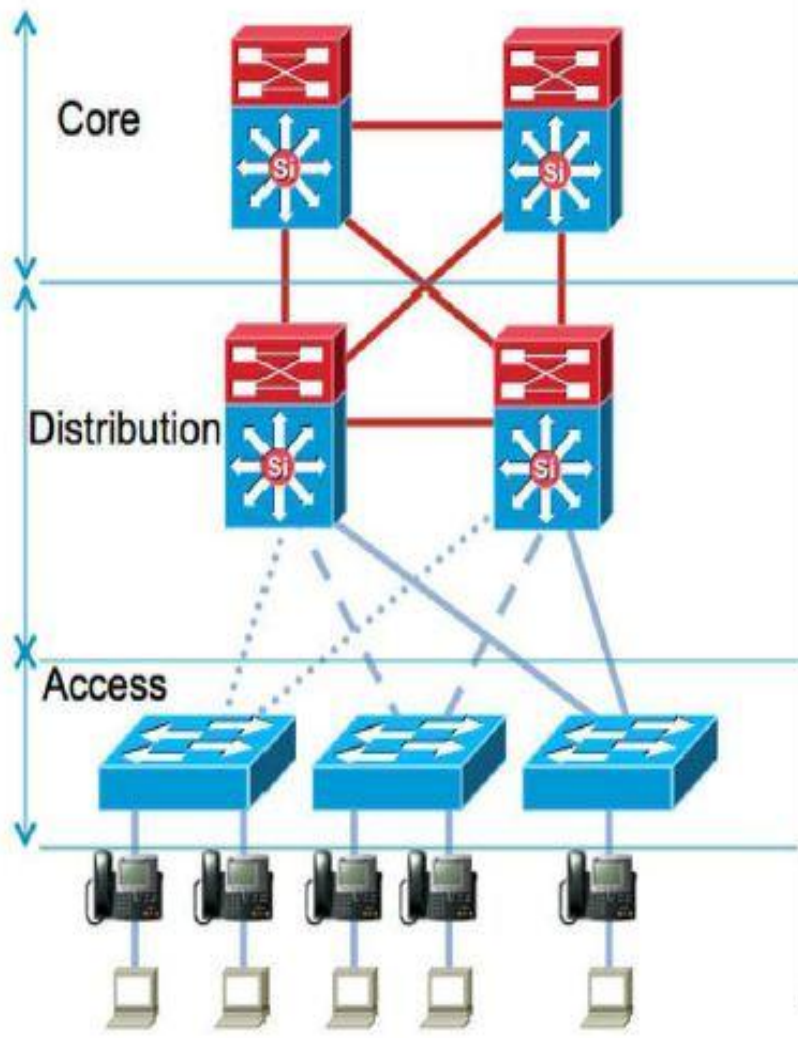
Typical Switch Vs. GPON Network:



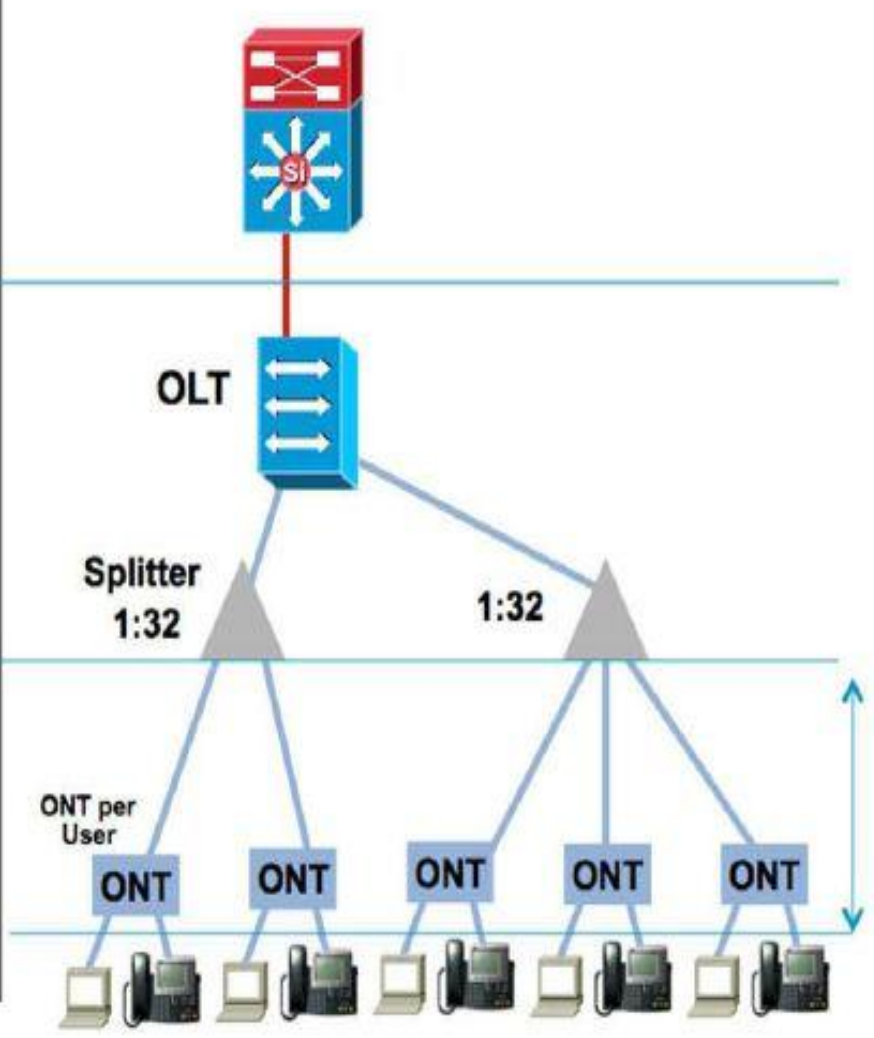
Ethernet Vs FTTx Connectivity

Switch Network Vs. FTTH : Comparison

Ethernet Design



GPON Design

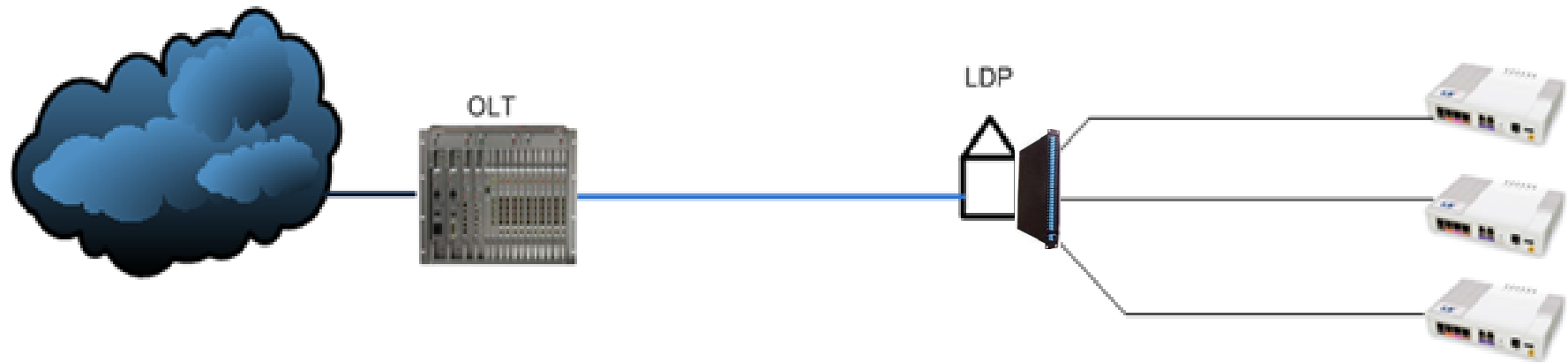


FTTH Vs. FTTB :

MPLS Cloud

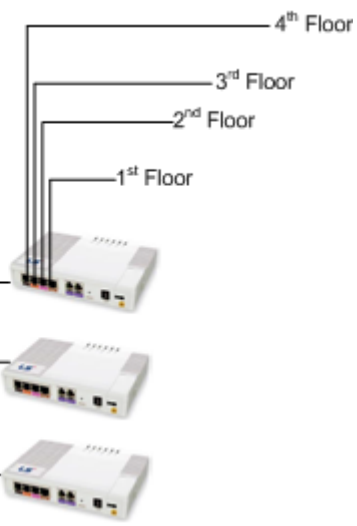
OLT

LDP

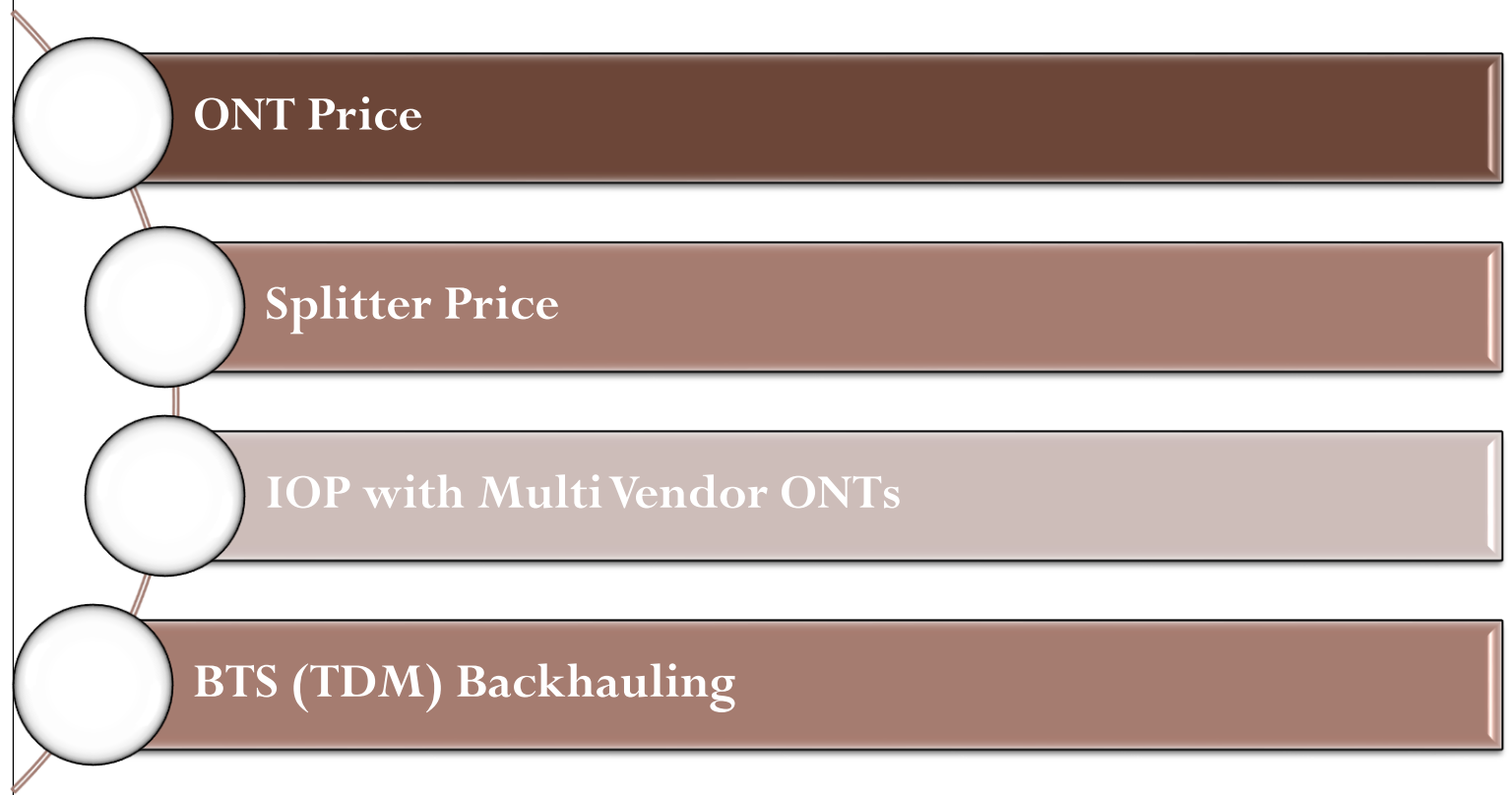


OLT

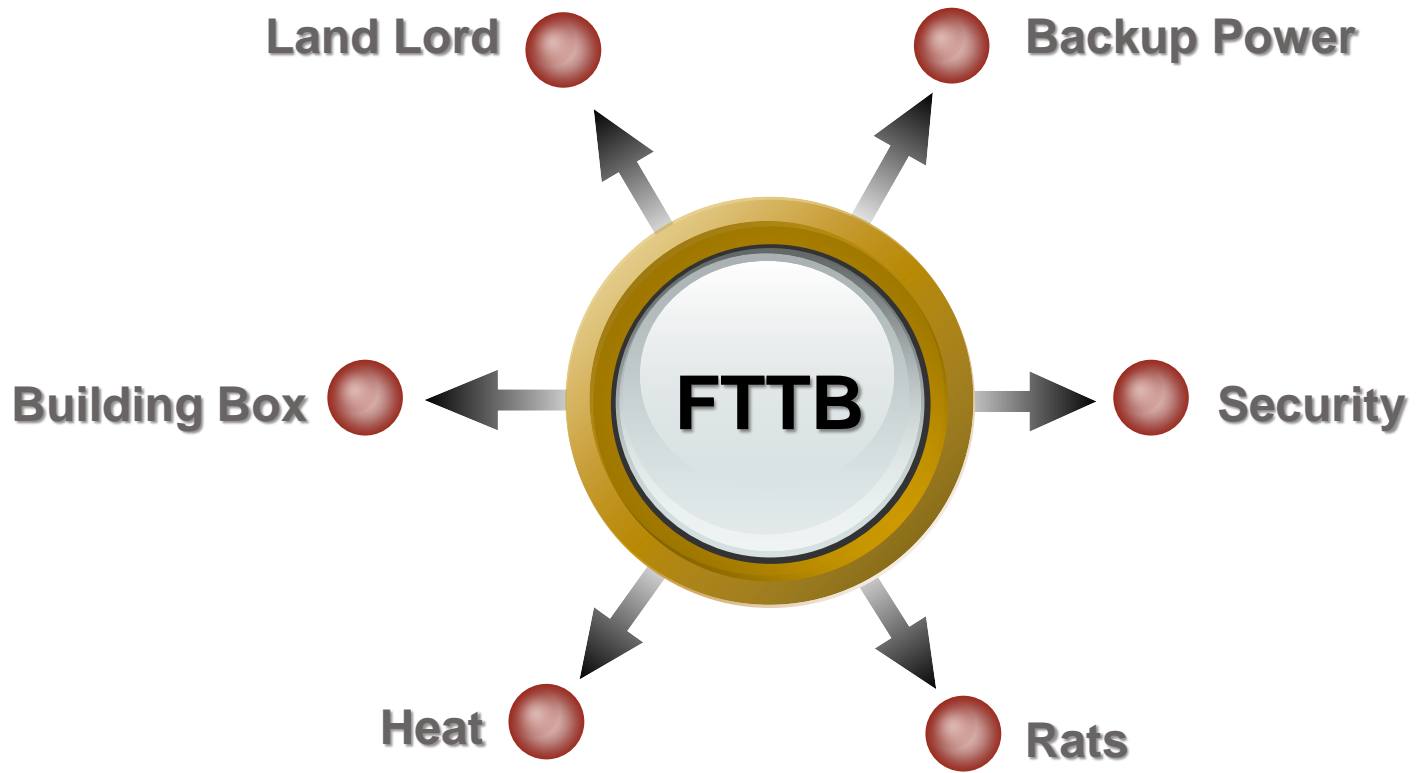
LDP



Challenges With GPON :



Problem with FTTB model :



Prospects of FTTx :



Low cost

Faster than others like DSL, Dial Up

Virtually unlimited bandwidth

Single fiber to the end user with triple play

FTTH features local battery backup and low-power consumption.

Reliable, scalable, and secure

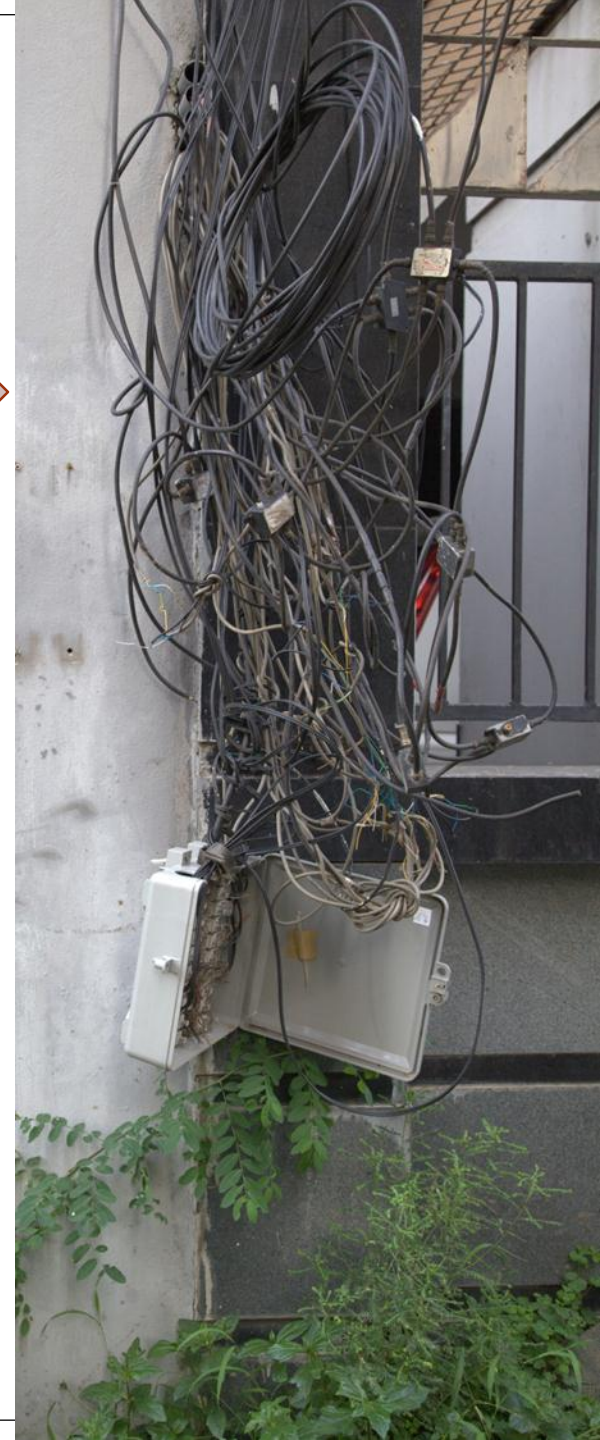
Easy to troubleshoot

No active components from the CO to the end user



Before FTTx

After FTTx



Benefits of FTTx Network in Bangladesh :

User Driven Network – Any Time Any Service

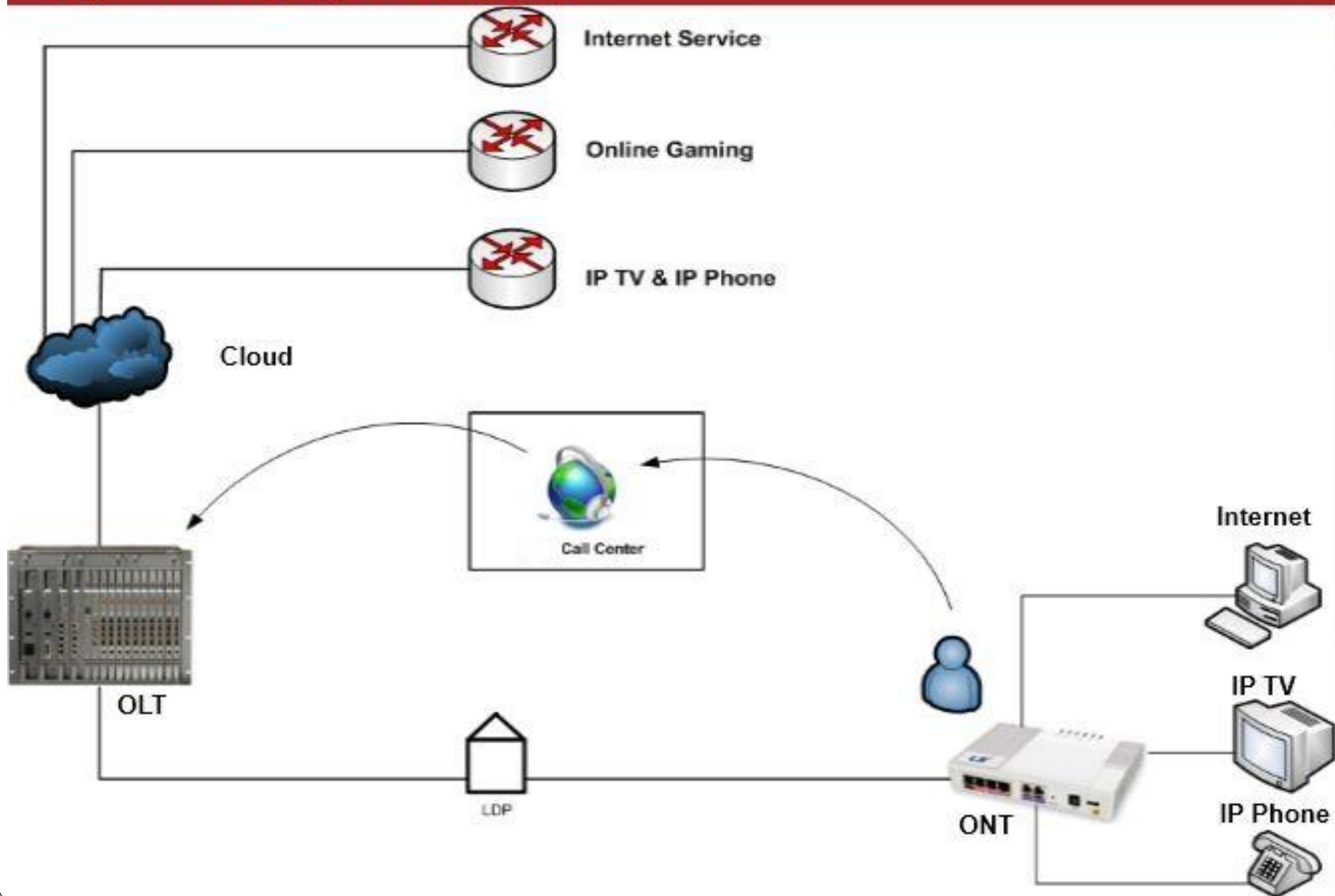
Single 24/7 Call Center for all ISP

Easy & Centralized O&M

Cost Effective – Minimum 40% Less.

Service Concentric Network

Any Time Any Service :



Achievement of Bangladesh with FTTx Network :



Connected WiMAX Base Stations

Ready for 3G BTSs

190 ISPs Up & Running

Layer 2 & 3 Capable Network

Ready for IPTV Services

Future Plan with FTTx Network in Bangladesh :



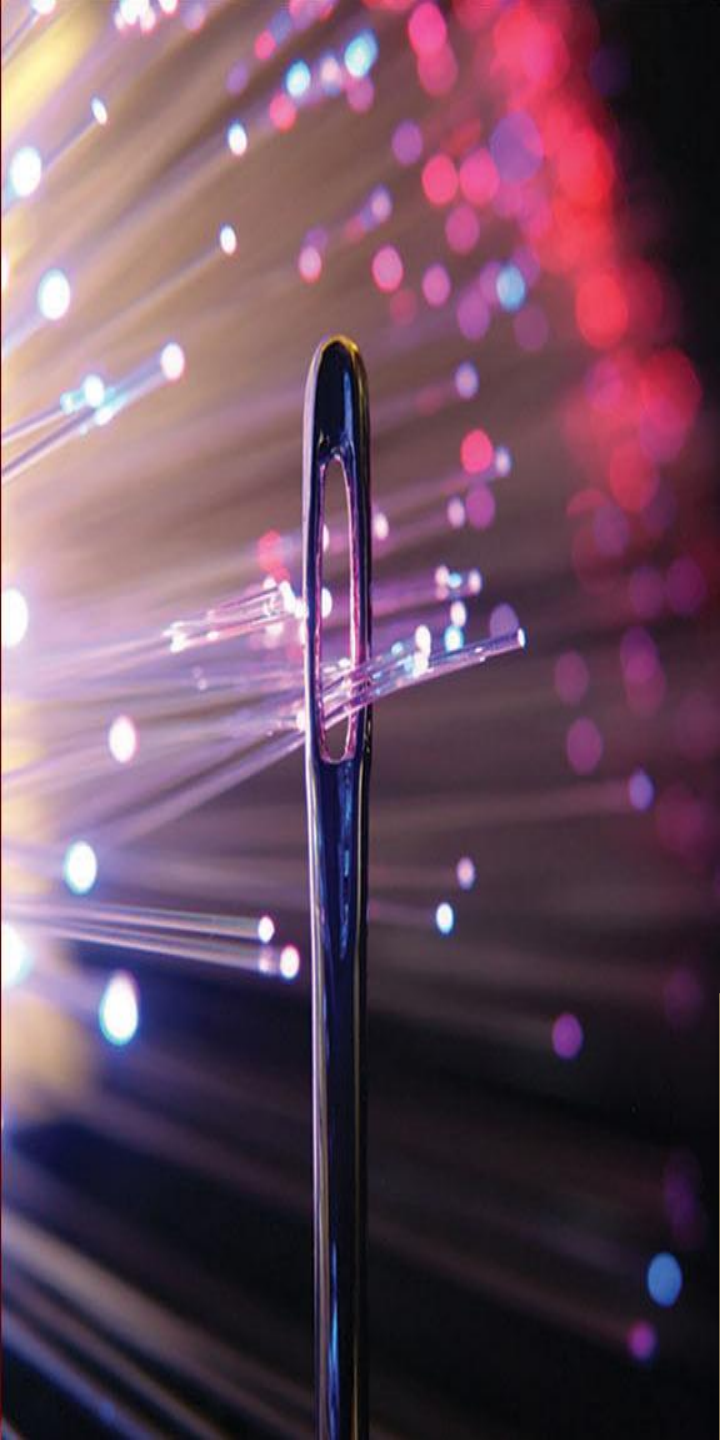
Online Gaming

Video on Demand (VoD)

Social Networking

Different type of Value Added Service

IPTV Services



Thank You

Q & A

