

# APNIC



<b>ASN</b>	4608
<b>Traffic profile</b>	Balanced
<b>Traffic Volume</b>	< 1 Gbps
<b>Peering Policy</b>	Open (for APNIC members) Selective (for others)
<b>Peering Locations (IX or POP)</b>	<ul style="list-style-type: none"><li>• POPs at NEXTDC B1, Brisbane, Australia &amp; Interactive, Brisbane, Australia</li><li>• IX Australia QLD, Australia</li><li>• Equinix Sydney, Australia</li><li>• MegaIX Brisbane, Australia</li><li>• MegaIX Sydney, Australia</li><li>• PIPE Networks Brisbane, Australia</li><li>• Plan to connect to IXPs in SG, HK &amp; JP remotely in coming months</li></ul>
<b>PeeringDB entry</b>	<a href="https://www.peeringdb.com/net/3103">https://www.peeringdb.com/net/3103</a>
<b>Website</b>	<a href="http://www.apnic.net">www.apnic.net</a>
<b>Contact</b>	<a href="mailto:peering@apnic.net">peering@apnic.net</a>
<b>Contact persons</b>	Tohid Naslpak, Shaqayeq Saleh, Sheryl Hermoso & Che-Hoo Cheng



# HURRICANE ELECTRIC INTERNET SERVICES

- ASN: 6939
- Peering Policy: Open
- Peering Location: Global on over 217 IX
- PeeringDB Entry: [as6939.peeringdb.com](https://www.peeringdb.com/as/6939)
- Contact: Peering ([peering@he.net](mailto:peering@he.net)) / Anurag Bhatia ([anurag@he.net](mailto:anurag@he.net))



# BBIX



No Peering, No Internet.

IX Name	BBIX	BBIX Hong Kong	BBIX Singapore
City, Country	<b>Tokyo, Osaka JAPAN</b>	<b>Hong Kong</b>	<b>Singapore</b>
Point of Presence	<ul style="list-style-type: none"> <li>• <b>Tokyo</b> <ul style="list-style-type: none"> <li>• NTT Data Otemachi Comspace1</li> <li>• Equinix TY2, TY4 @Tokyo CC1</li> <li>• Maruyama CLS</li> <li>• NTTcom Nexcenter,</li> <li>• Colt DCS</li> </ul> </li> <li>• <b>Osaka</b> <ul style="list-style-type: none"> <li>• NTT Dojima#4</li> <li>• Equinix OS1</li> </ul> </li> </ul>	<ul style="list-style-type: none"> <li>• <b>Mega-I</b></li> <li>• <b>Equinix HK1</b></li> </ul>	<ul style="list-style-type: none"> <li>• <b>Equinix SG1</b></li> </ul>
		<b>BBIX Thailand</b>	
		<ul style="list-style-type: none"> <li>• <b>True IDC MTG</b></li> </ul>	
Connected ASN	230+		
Peak traffic	2T+		
Route Servers	Yes (BIRD, Cisco)		

•Contact Information

- <http://twww.bbix.net/en>
- [bbix-sales@bbix.net](mailto:bbix-sales@bbix.net)



Charlie

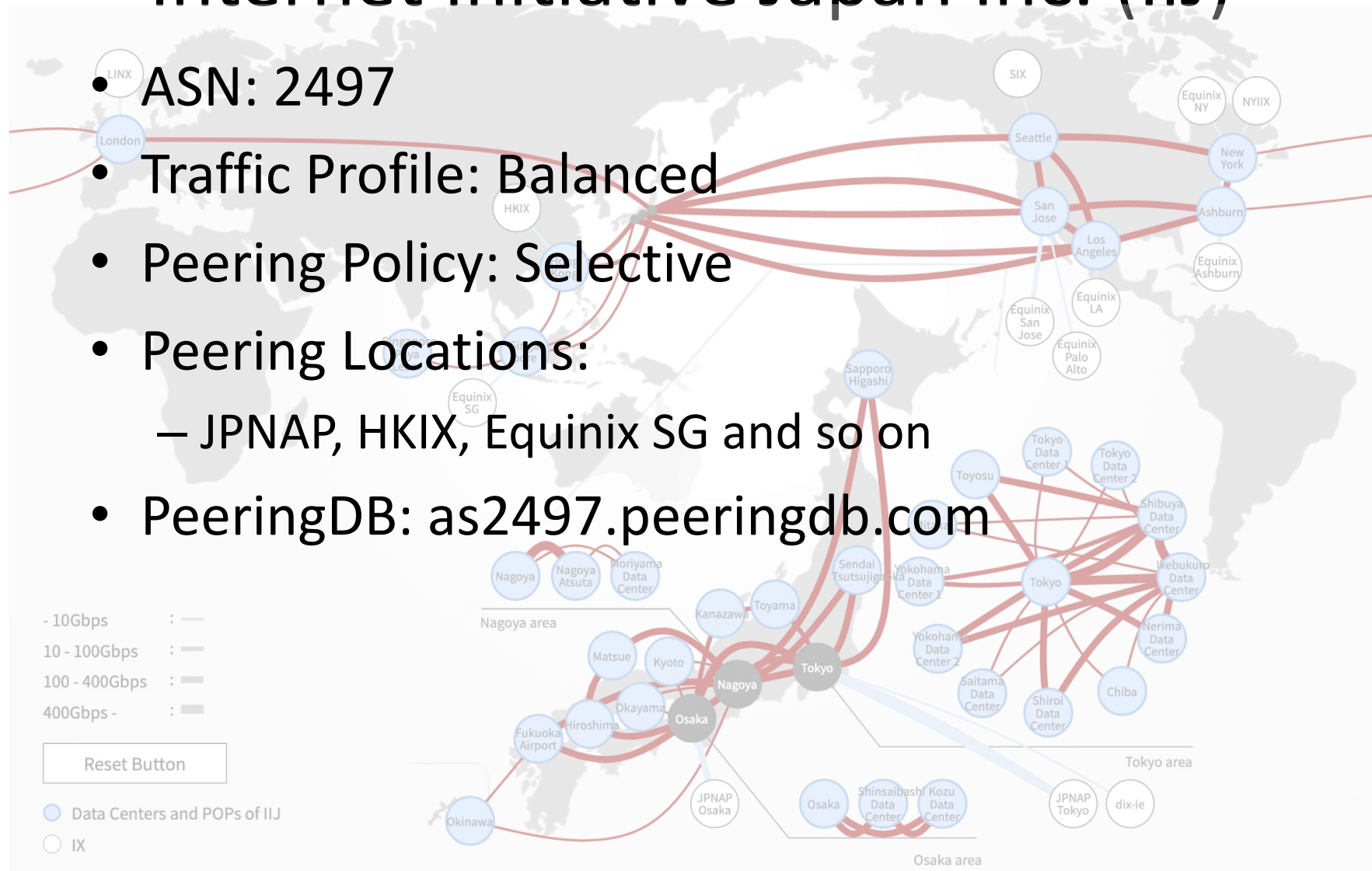
Araki

Lisa

Satoru

# Internet Initiative Japan Inc. (IIJ)

- ASN: 2497
- Traffic Profile: Balanced
- Peering Policy: Selective
- Peering Locations:
  - JPNAP, HKIX, Equinix SG and so on
- PeeringDB: [as2497.peeringdb.com](https://www.peeringdb.com/as2497)



# Peering Details

- ASN: 2906
- Traffic Profile: Content
- Peering Policy: Open
- Peering Locations:
  - Mumbai GPX
  - STT Delhi-GK1 &
  - STT Chennai VSB
- PeeringDB Entry:
  - [as2906.peeringdb.com](https://as2906.peeringdb.com)
- Contact:
  - [peering@netflix.com](mailto:peering@netflix.com)
  - [ntandon@netflix.com](mailto:ntandon@netflix.com)
- Info.about Openconnect
  - <https://openconnect.netflix.com/>



**NETFLIX**

# Internet Exchange Nepal (npIX) 2018 (ASN 24474)



IX Name	1. npIX –PTS 2. npIX –JWL
City, Country	Kathmandu, Nepal
# of connected ASN	41
Peak traffic	32G
Regular traffic	6.5 G

- Recent updates
  - 30 Paying members
  - IP, ASN and network transition planned for Aug end.
- Information
  - <http://www.npix.net.np>
  - [rupesh@npix.net.np](mailto:rupesh@npix.net.np)



*Rupesh Shrestha*





**Peering Asia 3.0**  
**6 to 7 November 2019**  
**Kuala Lumpur, Malaysia**

Hosted by:



Details can be found here: <https://www.peeringasia.com>



- ASN: 21859
- Traffic Profile: Content/Outbound
- Traffic Volume: > 1.5Tbps
- Peering Policy: Open
- Peering Location:
  - STT Mumbai, Chennai, Hyderabad, Kolkata, Netmagic Nodia,
  - Nxtra Bangalore, Chennai, GPX, CTRLS, Sify Rebale/Airoli
  - ExtremelX, Mumbai-IX, AMSIX
- PeeringDB: <https://www.peeringdb.com/asn/21859>
- Contact: [peering@zenlayer.com](mailto:peering@zenlayer.com)